



Desktop Ultrasonic Imaging System

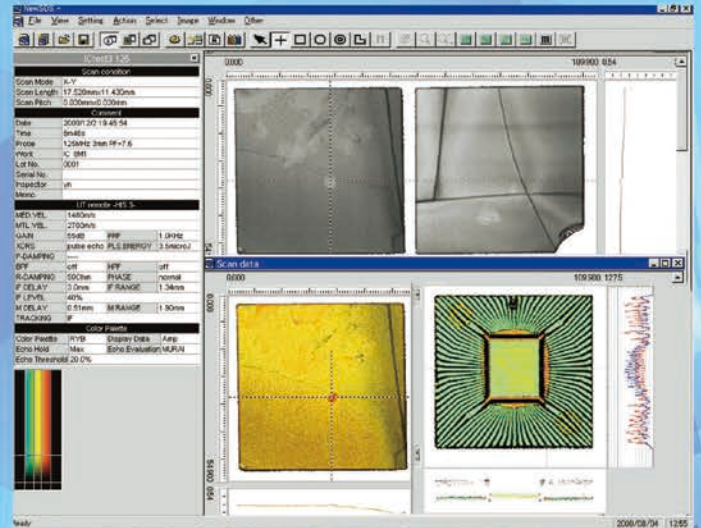
D-view®

High Frequency Ultrasonic
Flaw Detector HIS3 HF

Various Image Processing
Software

LAN Access Selectable

Compact Design



Ceramic Multilayer Substrate

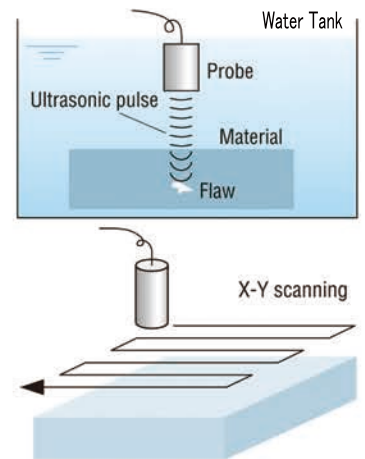


KJTD Co., Ltd.

Compact Type High Frequency Ultrasonic Imaging System for Material Inspection

Desktop Ultrasonic Imaging System, D-view is suitable for the laboratory and the office uses by its easy set up and the compact design.

This user friendly system and the well-developed data processing software are available for the inspections of various materials as well as our other SDS-series scanners.



Specification

Ultrasonic Flaw Detector : HIS3 HF

*HIS3 LF version is also selective.

Pulse Output	-200V max (no load)
Pulse Falling Time	1.0ns max
Receiver Band Width	1.0 - 300MHz (-3dB)
Gain Adjustable Range	0 - 71dB/1dB
Beam Path Measurement	0 - 40.96μsec
CPU Control	Parallel I/O, RS232C one each

Scanner (2300) (Standard Two Axes Type)

Scanning Range	X: 300mm - Y: 300mm - Z: 100mm(hand-operated Z) Probe angle regulation range θ1: ±25°, θ2: ±20°
Scanning Speed	Max.300mm/sec
Scanning Pitch	0.01 - 9.99mm (X - Y)
Scanning Mode	Plane scanning (X - Y mode)
Water Tank Capacity	380mm W × 390mm D × 178mm H
Other	Scanning Area Selection, Jog Dial Remote Control

Data Processing

Data Collection Points	Max.200,000,000 points (per one scanning)
Test Data Saving Drive	HDD, DVD-RW, USB
Setup Condition Saving Drive	HDD (Detector & Scanner Settings)
Image Processing Software	Contrast Display: 2 colors 256 contrast (arbitrarily selectable from 16 million colors including white & black) Color 16 contrast, RYB 256 contrast Echo Evaluation: Sound pressure contrast, depth contrast, MURAI contrast Real Time Processing: Plane, two direction cross sectional concurrent presentation (B, ST section) Image Processing: Plane image, cross sectional image, perspective image, 3D image, wire frame image, precise detection (zoom up test), measurement in image, enlargement, shifting to cursor position, area ratio, setup value display, echo height display, echo height perspective, selected points data collection
Option	LAN Access, Color Printer

Configurations & Power Source

Dimensions	Two Axes Scanner: 520mm W × 600mm D × 600mm H / Z Axes Max Time PC: 440mm W × 400mm D × 185mm H HIS3: 449mm W × 398mm D × 135mm H
Weight	Two Axes Scanner: 80Kg (Dry Weight) PC: 15Kg HIS3: 10Kg
Power Supply	100 VAC (±10%) 1KVA

- The contents of this catalog are current as of November 2019. Contents are subject to change without prior notice.
- The actual product color may slightly vary from the image.



<https://www.kjtd.co.jp>

Headquarters: 45th floor Sunshine60

1-1 Higashiikebukuro 3-Chome Toshima-ku, Tokyo, 170-6045 JAPAN
TEL: (+81) 3-5957-7367 FAX: (+81) 3-5957-7369

Osaka Branch: 9-29 Sumida 1-Chome, Higashiosaka-shi, Osaka, 578-0912 JAPAN
(ISO 9001) TEL: (+81) 72-965-6231 FAX: (+81) 72-962-6236

