

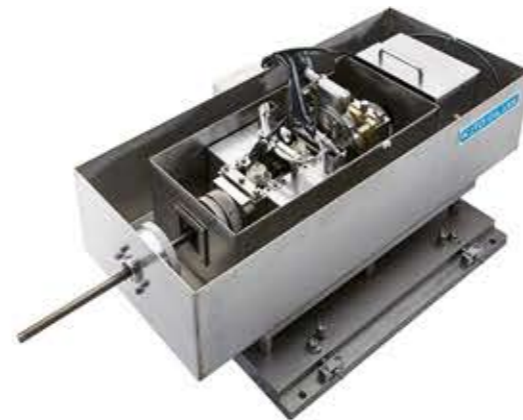
Small-Diameter Round Bar Ultrasonic Inspection System



Small-Diameter Steel Round Bar Ultrasonic Inspection System

| | Multi | Chevron |
|-----------------------|--|----------------------------------|
| Inspection Method | Normal beam pulse reflecting technique | V through transmission technique |
| Number of Channels | 8ch [circumferential direction] | 2ch [cross direction] |
| Maximum PRF | 1.5KHz/ch | 6.0KHz/ch |
| Detectability*1 | Equivalent to SDH Ø0.5 mm | Equivalent to FBH Ø0.5 mm |
| Couplant | Water(circulating type)*2 | |
| Outer Diameter | Ø10.0 mm-Ø30.0 mm*3 | |
| Max. Inspection Speed | 80m/min. | |
| Range of Gain | 0-100dB | |
| Evaluation Gate | 3 gates/ch | |
| Evaluation Level | 2 level/gate | |
| Gate Tracking | Fixed or tracking (Switchable) | |
| Other Functions | Suppression/Rejection/DAC/Semi-automatic sensitivity calibration Administration of testing condition/Simple data logger/A-scope image storage | |
| Display | 17 inches LCD | |
| OS | Microsoft Windows® | |
| I/F | PIO signal output sorting good/defective, Real-time error signal output | |
| Power | VAC 100/200 ±10% 50/60Hz | |
| Power Consumption | 3KVA | |
| Air | 0.4Mpa(for air purging) | |
| Temperature/Humidity | 5°C-40°C/20%-80% | |
| Option | 4ch Recorder/Printer | |

*1 It may vary depending on the quality and intergranular roughness of inspected material.
 *2 A special rust proof grease specification option is available.
 *3 Other diameter sizes can be available.
 Various kinds of customizations are acceptable. Please contact us for further details.



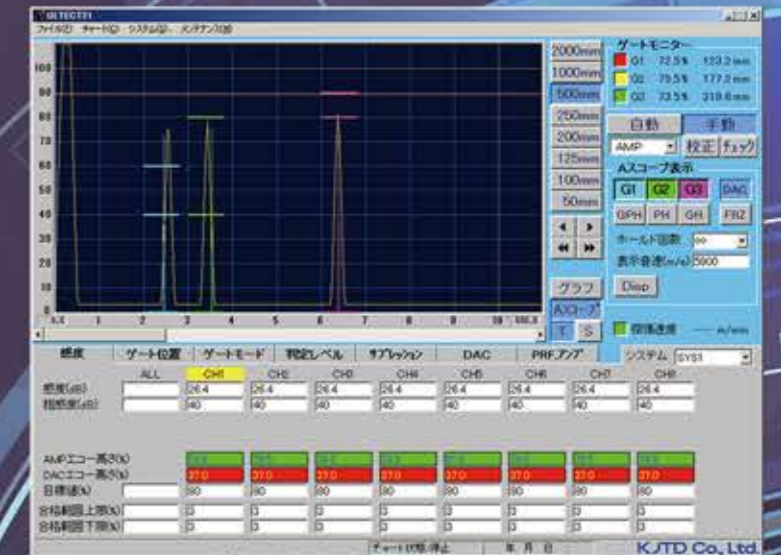
* Contents of this catalogue were based on May, 2019 and are subject to change without notice.
 * The color of products shown in the pictures might be slightly different from actual color.



https://www.kjtd.co.jp
 Headquarters: 45th floor Sunshine60
 1-1 Higashiikebukuro 3-Chome, Toshima-ku, Tokyo, 170-6045 JAPAN
 TEL: (+81)3-5957-7367 FAX: (+81)3-5957-7369
 Osaka Branch: 9-29 Sumida 1-Chome, Higashiosaka-shi, Osaka, 578-0912 JAPAN
 (ISO 9001) TEL: (+81)72-965-6231 FAX: (+81)72-962-6236



Customizeable Inspection Settings.
 Excellent Operating Performance.
 Self-diagnos Functionality

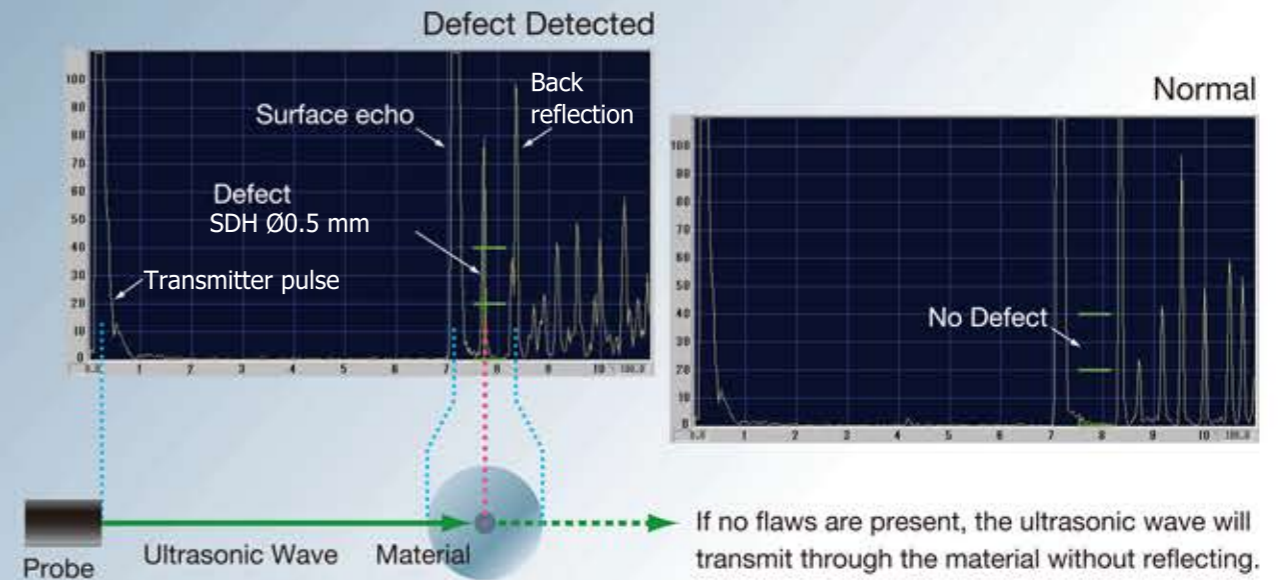
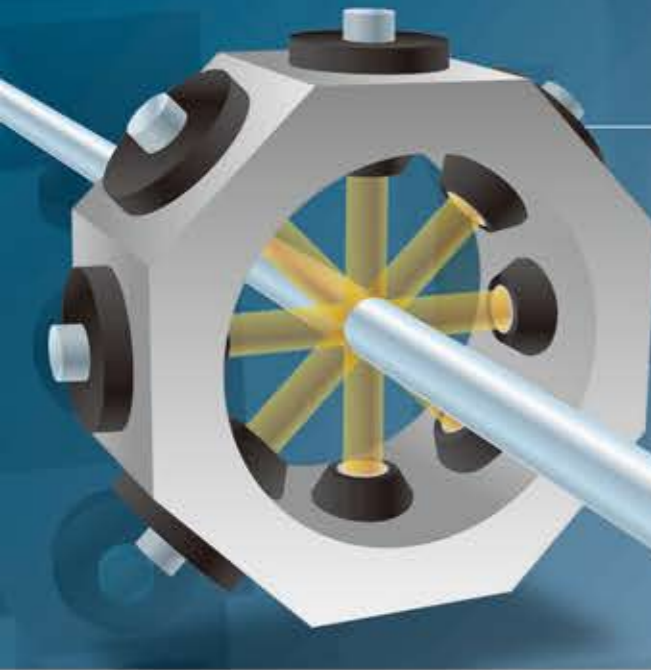


KJTD Co., Ltd.

Multi Channel Testing

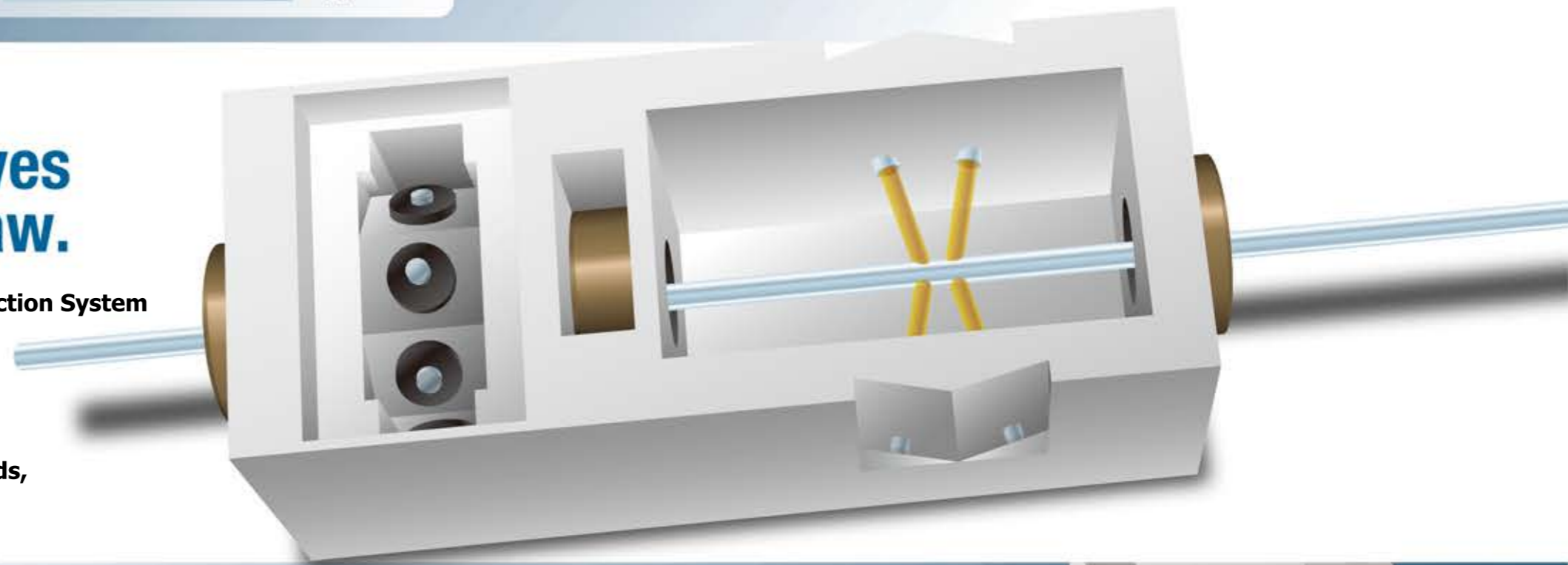
Multi-Detection

8 ultrasonic sensors increase coverage.

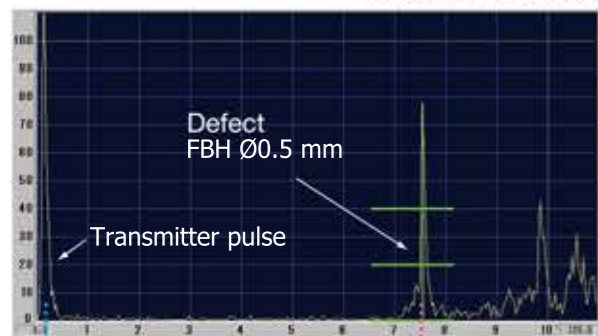


2 kinds of ultrasonic waves never miss a very fine flaw.

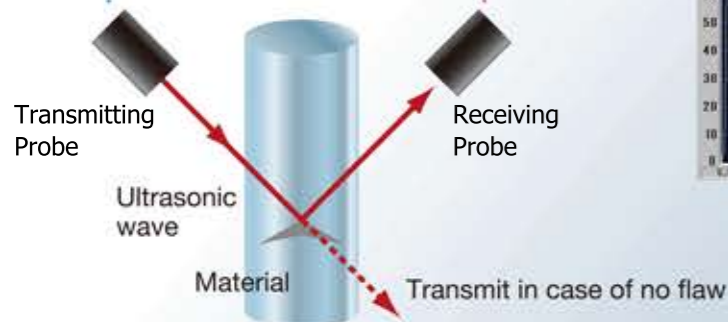
KJTD's Small-Diameter Steel Round Bar Ultrasonic Inspection System can detect inclusions, blowholes, cracks and also cracks that occur in the case of solid-drawn processing. The application of 2 kinds of inspection techniques increases detecting performance. By combining eddy-current and ultrasonic testing methods, tiny surface flaws can easily be detected.



Defect Detected



Normal



Chevron Crack Testing

Chevron Detection

2 pairs of probes find various orientation flaws

