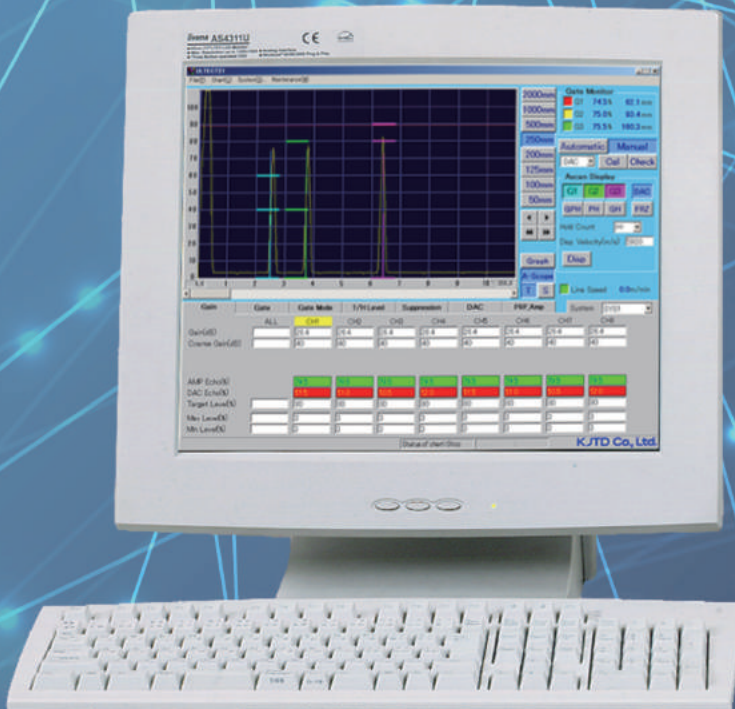
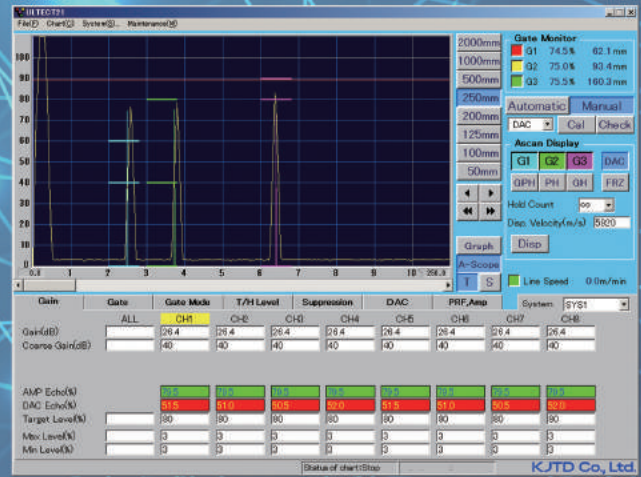




Multi-Channel Digital Ultrasonic Flow Detector ULTECT21

High Performance
Online Ultrasonic Flow Detector



For Automated Online Inspection

The multi-channel detector ULTECT 21 is intended for automated online inspection. Unlike conventional products, this equipment by itself has all the functions such as blanking control, marker timing (delay) adjustment, I/O remote control, and line speed measurement.

Previously the detection panel, which requires large space, had these functions. The waveform is displayed on the PC screen – we refer to the equipment as “New Type Automated Flaw Detector”.

Equipment Features

- Up to 8 channels (Extendable up to 256 ch)
- Switchable: single / double probe technique in all channels
- Switchable: separate / simultaneous excitation
- Max. main PRF: 12 kHz
- 3 gates, 2 level (each channel)
- Gate tracking
- Noise suppression, rejection
- DAC correction
- Blanking control
- Self-diagnosis and amplitude linearity check
- Automated gain calibration
- Line speed measurement
- Detection chart display and filing
- Analog, event and marker output
- Recorder remote control
- Available add-on circuit

(Please inquire for your desired interface.)

Specifications

| | |
|----------------------------|------------------------------------------------------------------------------------------------------------------|
| Number of Channels | 1 - 8 ch (extendable up to 256 ch) |
| Sound Velocity | 1,000 - 7,000m/s |
| Pulser Mode | Spike pulser |
| Pulse Voltage | 300V (no load) |
| Amplifier | Switchable: Linear / Log amplifier (select at the time of shipment) |
| Frequency Range | 1 - 15 MHz (-3dB) |
| PRF Main | 12 kHz (max.) |
| Gain | Coarse: 0 / 20 / 40 dB, Fine: 0 - 60.0 dB in steps 0.1 dB, |
| Rejection | 1 - 80%, 1% step |
| DAC | 8 points (max.) Range of correction: 0 - 32.0 dB Resolution: 0.5 mm (6,000 m/s) |
| Gate | Fully independent 3 gates Evaluation level: H/L Synchronization: T / S / B / S - B tracking |
| Interface | 1,000BaseT ×2, Serial Port ×2 USB2.0 ×4 |
| Dimensions (standard rack) | 482.6(W) ×354.8(H) ×320.0(D) (except the protruding part), 19 inch rack, 8U size, EIA Standards |
| Standard Package | LCD (17 inch) ×1, Keyboard ×1, Mouse ×1, Power cable ×1, Connecting cable ×1 (except external connections) |

- The contents of this catalog are current as of February 2019. Contents are subject to change without prior notice.
- The actual product color may slightly vary from the image.



<https://www.kjtd.co.jp>

Headquarters: 45th floor Sunshine60

1-1 Higashiikebukuro 3-Chome Toshima-ku, Tokyo, 170-6045 JAPAN
TEL: (+81) 3-5957-7367 FAX: (+81) 3-5957-7369

Osaka Branch: 9-29 Sumida 1-Chome, Higashiosaka-shi, Osaka, 578-0912 JAPAN
(ISO 9001) TEL: (+81) 72-965-6231 FAX: (+81) 72-962-6236

